

# Silver Strings Dulcimer Society Soundboard

OCTOBER 2014 31 YEARS SHARING ACOUSTIC MUSIC Aug 1983–2014 Issue 354

Website : [www.silverstrings.org](http://www.silverstrings.org)

## PRESIDENTS CORNER \_\_\_\_\_ Marsha Kozlowski

Busy, busy, busy – like bees preparing for fall. That describes all that is going on with Silver Strings. I hope each of you is a part of it as much as you can be. There is a lot happening: the Banquet in a couple days, rehearsals for our Christmas playlist; one playdate this month, election preparations, a Variety Night, not to mention a regular jam. Almost as many things as we have fingers. Are your fingers in the pie?

The buzz is on – watch for the Christmas playlist and start practicing these. Work on a tune to share on Variety Night. Get to know some of the new members or welcome older members we haven't seen in a while – our membership is over 100 now.

The Board has been busy working to keep things running smoothly. We thank all those who help us with the particulars, whether it is bringing a snack, making coffee, putting the tables back in place after the jam and so on. Each of you have busy lives but your contribution to this club help make it a vibrant place to play music, enjoy all the variety of instruments and continue the heritage of traditional tunes.. . . . .Marsha

## FROM THE TREASURER'S BOX: Terry Kozlowski

**HAT ORDERS:** There are still 4 of you who have not paid and received the club hat you ordered. There are also 3 extra hats if someone would like on who did not order one. The cost is \$10. Contact Terry to purchase at the next jam in October.

**MEMBERSHIP:** Terry is accepting membership renewals for 2015. So far 11 people have already renewed their SSDS membership. Wonderful! When you renew, if you have changed your phone number, address or e-mail, please make note of it so the board will have correct information on you and you receive all the communications.

## PLAYDATE CHATTER \_\_\_\_\_ VP BUSINESS

Our Holiday playdate season is fast approaching and our first Holiday practice is October 7<sup>th</sup>! In this newsletter you will find a new 2014 Christmas Playlist. Many of you requested a change in the list so I took that to heart and totally revised our list of previous years. The Christmas playlist includes ONLY Christmas tunes—some new and some old that we haven't played in a while. I think many of you will be pleased with the new list and the variety of tunes. And, I also expect some of you will be resistant to change!

The Christmas Playlist is by no means set in stone. And, it also includes more tunes than are needed for an hour performance so if some don't work out, they can be deleted or put on the back burner. I expect that the list will be revised and tweaked several times during the upcoming Holiday practices.

Sheet music for all the tunes is in Dropbox under Holiday Music. It is VERY important that we are all using the CORRECT version of the Holiday tunes. Please printout the tunes so we are all on the same page at our upcoming practices. This has always been a big problem in the past and I hope to avert it this year! A big thank you to the members who helped me create the list, get all the sheet music in Music Time and ultimately in Dropbox.

In the near future, there will also be a Library Holiday playlist that will include non-religious and traditional tunes like has in the past. Holiday playdate signup sheets will be placed out at our October 16<sup>th</sup> club meeting.

Please see Calendar of Events in the newsletter for dates and times of all our 13 Holiday playdates. If you plan to play at a Holiday playdate, please try to attend at least one practice! And, if you don't plan to play at a Holiday playdate, you are still welcome to come to practices! The Holiday practice dates are Tuesday, October 7<sup>th</sup>; Wednesday, October 22<sup>nd</sup>; Wednesday, November 12; and Tuesday, November 25<sup>th</sup>. All practices will be held at Good Hope at 7pm. . . . . KT

### New Members:

**Carol Wasilewski**, Garden City  
Non-playing member but #1 fan

**Ryanne Lesinski**, Garden City  
Dulcimer Player



## MARK YOUR CALENDAR

### OCTOBER

- 2....**SSDS ANNUAL BANQUET** . . . . 6:00-11:00  
 7....**CHRISTMAS PRACTICE** . . . . . 7:00-?  
 14...**PLAYDATE** . . . . . BC . . . . 3:00-4:00  
     Heartland Health Care . . . . . Canton  
 16...**SSDS Meeting and Jam** . . . . . 7:00-?  
 22...**CHRISTMAS PRACTICE** . . . . . 7:00-?  
 30...**SSDS Variety Night** . . . . . 7:00-?

### NOVEMBER

- 12...**CHRISTMAS PRACTICE** . . . . . 7:00-?  
 25...**CHRISTMAS PRACTICE** . . . . . 7:00-?

C=Casual, BC=Business Casual

## FROM THE SECRETARY'S DESK \_\_\_\_\_ Mick Mastal

There was no business meeting last month.

## IT'S OCTOBER...LET'S CELEBRATE !

### BIRTHDAYS

- 1....Ernie Stewart  
 12...Nancy Straky  
 17...Carol Anne Matthews  
 26...Ann Wassell  
 28...Valerie Karhu  
 30...Bev Scott



### ANNIVERSARIES

- 18...Harold Crane. . . . . 39<sup>th</sup>  
 19...Bob & Sally Niemczewski. . . . 40<sup>th</sup>  
 29...Walt & Pat Jablonski. . . . . 65<sup>th</sup>  
 22...David & Theresa Smith. . . . . 21<sup>st</sup>

## ANN'S GROUP

All beginner hammered dulcimer players are invited to participate in a group slow jam and learning session twice a month at my house.

We usually meet on the second and fourth Wednesday each month from 1 to 3 pm.

There is no fee. Please email or call me if you can come and I will give directions to my house. I live in Livonia near 8 Mile and Newburg.

Phone: 734-744-4255

Email: ann.wassell@yahoo.com

## Dulcimer Learning Opportunity with DeeDee Tibbits

DeeDee is having another weekend workshop up in Caro, MI. on October 25. I have been to two or three of these and highly recommend them. The Friday nite jam is great fun. And you come away from the workshop with all sorts of ideas and inspiration to expand your playing.

Marsha

Information is on page 4 of this newsletter.

## To print the October play list,

please click on our website or this link :

<http://www.silverstrings.org/sections/tunes/PDF/2014/oct14.pdf>

## Silver Strings October 2014 Playlist

Key	Tune	Play
D	Whiskey Before Breakfast	3
D	Over The Waterfall / Mississippi Sawyer	3/3
G	Westphalia Waltz	2
G	Red Wing	3*
G	Maggie	3
G	Southwind	3*
Em	Road to Lisdoonvarna / Riding Load Hay	3/3
Am	Cold Frosty Morn	3
D	John Ryan's Polka	3
G	March of St Timothy	3
G	Puncheon Floor	3
Em	Tamlin	3
Em	Missouri	3
D	Coleman's March	3*
D/D	Bonaparte Crossing Rhine/Flop Eared	3/3
D	Snake River Reel	3
Em	Dancing Bear	3
G/G	Seneca Square Dance/Mairi's Wedding	3/3
D	Simple Gifts	3*
G	Scotland The Brave	3
D/D	New <b>Ending Medley</b> : Soldier's Joy/ Liberty	2/3+
	<b>Extras</b>	
D	Hey Polka	5
	*2 <sup>nd</sup> time: If instruments are available— Fiddles, MD, Harmonicas or Whistle take it with backup; HD's softly.	

## Silver Strings Dulcimer Society Music:

We have been given permission, by several composers, to play their music in our club. We also pay for a license that allows us to play some of our favorite tunes. We want to protect our Silver Strings members and respect the composers who have generously shared their music with us. In consideration of the composers and SSDS, do not sell, copy, give away or share any of our Silver Strings music.

## BANQUET ANTICIPATION

The Banquet will be happening just after this is published. Hopefully you got a ticket for this event. It will be a full evening with a member's hobby display centering the social hour, a wonderful meal followed by entertainment (Mitch Manns duo playing bluegrass) and jamming. All for \$10/member and \$15/guest.





## Election Perspective and Update

At the time of this writing, the Election Committee is working hard to get people to run

for a board position. So far there are 4 who are willing to be on the board. The interesting thing is that they are all back-up players. Approximately half of our members are HD or MD players, but at this point, not one is willing to be on the board. This seems odd if not sad for a dulcimer group not to have a dulcimer player on the board. While our by-laws do not stipulate that the Board has to have a HD or MD player, it will be strange to have a Board without one.

The position for which nobody has offered to run is VP-Business. Without someone willing to do this, our gigs would come to a halt. The club would continue, but it would not be possible to continue the performance aspect. It also means that the income generated from paying performances would be lost. The club's character would change to that of a jamming club. There would most likely be fewer social events as well. One suggestion is for a team approach with two people sharing this job – one's whose primary function would be "agent" through which the booking is done and "road manager" who takes charge of the performances. Whether this is possible, who knows? And since we have been unable to get even one person to run, what are the odds of getting two people to do this. Stay tuned. The elections are next month. Contact Peggy Kustra if you have any questions or are willing to be on the Board. Marsha

## Dulcimer Orchestra Call

Did you attend one of the Steve Eulberg workshop at Evart this summer? Marsha is trying to collect all the parts (4 of them) for each of the tunes that was played. If you would scan a copy of the part you had and send it to her via e-mail, it would be appreciated. ([mt.koz@hotmail.com](mailto:mt.koz@hotmail.com)). She hopes to assemble an "orchestra" sometime in 2015 to play these tunes: the finale to Beethoven's 5<sup>th</sup>, a selection from Vivaldi's Four Season's concerto and 2 others. If you know someone who was there and had a different part than you, ask them if they would send her a copy of their part. She seems to have 3 out of 4 parts for each tune. If it is possible, the goal is to learn the parts, get together at a day event and perhaps be able to perform it at Evart next July.

## FESTIVALS-WORKSHOPS-JAMS

### UNCLE CARL'S DULCIMER CLUB

2<sup>nd</sup> Saturday of month, Sept thru May, 12:30-4:30pm  
(next is Oct 11<sup>th</sup>)

For info. call Pennye 517-547-7448

### NETTLE LAKE MUSIC JAM

First Saturday of Month Sept thru May – 6pm  
(next is Oct 4<sup>th</sup>)

For info contact Jack & Marilyn Mullins 517-270-2870

### MAUMEE STREET MUSIC JAM

(formerly called West Adrian Jam)

Forth Saturday of the month – 6pm (next is Oct 25<sup>th</sup>)

For info. Contact:

Jack & Marilyn Mullins 517-270-2870

Or Larry Roper 248-437-5403

### SUGAR (Saginaw Ukulele Gurus and Rookies)

First Saturday of the month 10:30-Noon (Oct 4<sup>th</sup>)

Now at Sullivan's Restaurant on Gratiot in Saginaw, MI

Songs are posted beforehand on the internet

For info email: [muzyka2007@yahoo.com](mailto:muzyka2007@yahoo.com)

### MT. HALEY JAMBOREE

Last Friday of every month (Oct 31<sup>st</sup>)

Mt. Haley Township Hall, Midland County

1:00-4:00-Folk and Traditional Music Jam

Admission is free but donations to the Metamora Historical Society are appreciated. Metamora's 1888 Old Town Hall is part of an historic community.

For info. Call Alice Gajewski at 248-628-5287

[mthaleymfsm@gmail.com](mailto:mthaleymfsm@gmail.com)

### GREAT LAKES UKULELE GATHERING

First Wednesday of the month 7:00 (Oct 1<sup>st</sup>)

Good Hope Lutheran Church,

28680 Cherry Hill, Garden City

A donation of \$3.00 is requested for the church.

Contact: Bob at [bsnemo@yahoo.com](mailto:bsnemo@yahoo.com) or

David at [musicalcraft@yahoo.com](mailto:musicalcraft@yahoo.com)

### PITTSFIELD OPEN BAND

Pittsfield Grange 3337 Ann Arbor-Saline Road, Ann Arbor, First and third Saturday from 3-6pm.

<http://www.aactmad.org/sa/pob.html>

### LAMS - Livingston Acoustic Musical Society

3<sup>rd</sup> Saturday of the month 7-11pm (Oct 18<sup>th</sup>)

Fowlerville Church of the Nazarene

8040 Country Corner Drive, Fowlerville

Contact: Tony Miceli 517-223-9590

### FARMINGTON JAM

Universalist Unitarian Church

25301 Halsted Rd. Farmington Hills 48335

This is a fun jam - Second Tuesday of each month from Sept - June at 7pm

Many players come to play dulcimers, fiddles, guitars... so come on out. Even if you don't play, or are just a beginner, you're welcome.

And -if you ARE a beginner, this is a good place to meet people and get involved.





**Rick Thum**

**Saturday November 15, 2014**

**Location:**

Good Hope Lutheran Church  
28680 Cherry Hill Rd.  
Garden City, MI 48135

Contact Rick Thum

**314-406-0690**

Email: [rthum@rthum.com](mailto:rthum@rthum.com)

Website: [rthum.com](http://rthum.com)

**9:00 - 10:30AM Workshop #1 BEGINNERS \$25**

We will explore the basics and more depending on the level and needs of participants.

**11:00 - 1:00PM Workshop #2 ALL LEVELS \$30**

Applying chords. We will learn how to use the chords. Lots of hands on playing.

**1:00 - 2:00PM Lunch**

**2:00 - 4:00PM Workshop #3 ALL LEVELS \$30**

A quick and easy way to find embellishments. How to know what to add and when.

*Take more than one workshop and take \$5.00 from each.*

**6:00 - 7:30PM CONCERT \$12**

*If registered in a workshop concert \$6.00*

**7:30 - 9:30 OPEN JAMMING**

*There will be an all-day running jam session in a different room for those not choosing the workshops.*



DeeDee Tibbits' love of music and love of teaching makes her workshops a fun place to be. DeeDee combines learning techniques both visual and practical, and will have the seasoned player and the beginner gleaning information and skills while feeling challenged, but not overwhelmed. In this one day workshop students will learn the essentials for creating their own arrangements and how to make the song pleasing to the ear. Participants will experience the world of playing two hand separation, improvising on a minor pentatonic scale, and practicing tips for becoming a better all-around player.

## DeeDee Tibbits

### HAMMERED DULCIMER WORKSHOP

**Saturday: October 25, 2014**

9:00 am — 4:30 pm

Presbyterian Church

215 Almer St

Caro MI 48723

#### Event Schedule:

**Friday: October 24, 2014**

**Informal Jam Session**

**7:00-10:00 pm**

This is open to anyone who would like to participate. Bring snacks to share and your own beverage.

**Saturday: October 25, 2014**

**Registration & Welcome**

**9:00 am**

(continental breakfast provided)

**Session I**

**9:30 am-12:00 pm**

**Lunch**

**12:00—1:30 pm**

**Session II**

**1:30-4:30 pm**

**Informal Session**

**5:00-7:00 pm**

(One last chance to jam!)

**COST: \$55** Space is limited so register early. Sorry, we cannot hold a spot for you without receiving your payment.

For info: Phone: **989-551-4902**

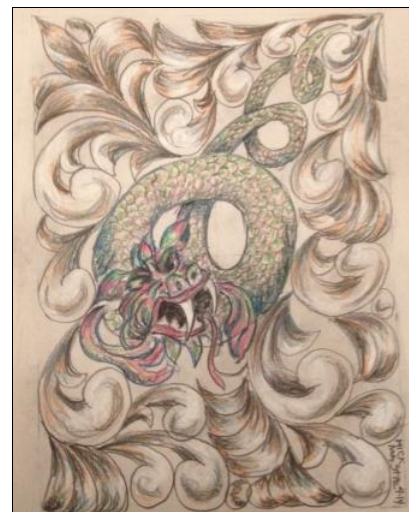
E-Mail: [Kandee\\_Marie@yahoo.com](mailto:Kandee_Marie@yahoo.com)





**The Annual Osgood Jam** went off despite a few hitches, a plumbing issue, a postponement, and then a "little" rain storm, but those who made it still had a good time. You can't stop the music!

\* \* \* \* \*



**Mick Mastal** who is serving as this year's club secretary showed an interested little guy how he plays the mandolin.

Mick also has a number of artistic talents including drawing, painting, and metal carving. See the lovely fine detail in the truss rod cover on this mandolin.

## From the past...



It's 1986 and Silver Strings is celebrating its 3rd year. We have 48 active members, our club dues are \$10.00 a year per member plus new members pay an additional \$5.00 music fee. We have 8 elected officers on our official board serving for a 1 year term. Our Pres. is Lynn Bower; our VP of Business is Stephanie Mulken; VP of Programs is Ellen Washington; Sec. is Larry Green; Treas. is Frank Bower; Newsletter Editor is Rose Hines; Music Coordinator: Pat Tait; and Historian is Charlene Berry. Our meetings are still held at Fischer School in a very cramped space and we have to be out by 9: pm sharp, so as usual we socialize at the A&W down the street afterwards. On June 5th we held our last meeting at the school and moved to Good Hope Lutheran Church. Good Hope Lutheran Church had a spacious room, was rent free, and we could use it every 1st and 3rd Thursday year round and we didn't have to be out by 9: pm. The agreement was no smoking, children had to be in the meeting room at all times, and we had to leave the room as we found it. It was the perfect spot! Solos were regularly performed at our meetings to introduce new songs to the group to learn, and of course, lots of JAMMING of the old ones too. We developed a music list with a "code" letter in front of each tune: "G" meant our group played it good; "R" meant that the tune was in the rough stage and needed to be practiced; "N" meant that the tune hadn't been passed out yet. We have over 20 "G" tunes now like Amazing Grace, Drunken Sailor, Redwing, Flop Eared Mule, and Westphalia Waltz. The "R" ones include Ashgrove, Off To California, Peek-a-boo Waltz and others, the "N" ones are I'll Fly Away, Simple Gifts, Music Box Dancer, and the Devil's Dance Dream Reel. We now also have a performing group of about 4-8 players who play at different local events like the 100th Anniversary of the Ann Arbor RR Station, the Cobblestone Farm Festival, Crossroads Village, and at the Cobo Hall Festival of Trees. Our group has several hammered dulcimers, a bell player, recorder, harmonica, washtub bass, washboard, and guitar player. This group usually gets paid \$25.00 for their performances and sometimes higher. Up at Evart camping is still \$4.00 per day with no hookups anywhere in the fairgrounds and the registration is the same \$1.00. We had our annual picnic this year in Milford at Larry Green's house and the banquet was at the Ram's Horn Restaurant in Redford. Some highlights this year include: on May 9th the Detroit Free Press published an article about our club to introduce us to the music community, on June 1st we played our first "paid" gig at the Wyandotte Flower Show, and in July we made our first debut playing on stage at the Evart Dulcimer Festival along with 2 young members- Andrea and Laura Ford ( ages 7 and 5) and were very well liked. It has been a very rewarding year first relocating to Good Hope Lutheran Church, being asked to perform at area events, learning new tunes, and welcoming new members. Pres. Lynn Bower (edited by Ernie Stewart)



### "I know I can play better but...

It sounded better at home.  
I can't play when someone is watching.  
I play better in the morning.  
I play better at night.  
I know I started it, but I can't play it that fast.  
I can't play it that slowly.  
I can only play standing up.  
I can only play sitting down.  
These are the wrong hammers.  
I'm not warmed up.  
But you told me to play it that way.  
You never told me to play it that way.  
I must be tired.  
These are the wrong glasses.

I get vertigo when I move my head.

I have an aging brain.

I have an aching head.

The dulcimer is at a funny angle.

This stand is too low.

This stand is too high.

The light is all wrong.

It's too bright in here.

It's too dark in here.

There are too many shadows.

I didn't practice very much.

I hit the right note but the instrument must be out of tune.

The tune shouldn't go that way any way."

Anything sound familiar? Excuses excuses!



## 2014 Silver Strings Christmas Playlist

Key	Tune	Play
G	Jingle Bells (Start with Chorus)	3 1/2
G	Deck The Halls (Tag by Starter)	3
G	Let it Snow! (Tag by Starter)	2
C	Winter Wonderland	3
C	Silver Bells	3
C	Holly Jolly Christmas	3
D	Frosty The Snowman	2
D	Rudolph The Red Nosed Reindeer	3
G	Up On The Housetop	2
G	Oh Christmas Tree	3
C	Jingle Bell Rock	2
D	Jolly Old St Nickolas	3
G	Angels We Have Heard On High	3
G	Bring A Torch Jeanette Isabella	3
G	Hark! The Herald Angels Sing	3
G	Away In The Manger	3
Em	God Rest Ye Merry Gentlemen	3
G	We Three Kings (Tag by Starter)	
D	It Came Upon A Midnight Clear	3
Dm	What Child Is This	3
G	O Come All Ye Faithful	3
G	He Is Born	3
G	The First Noel	3
C	O Holy Night	2
G	Joy To The World (Tag by Bass)	3
D	Simple Gifts (Ritard End)	3
D/G	Silent Night (Ritard End)	2/2
G	We Wish You A Merry Christmas (Ritard End)	2 1/2

## SSDS BOARD OF DIRECTORS – 2014

**PRESIDENT** ..... Marsha Koslowski  
mt.koz@hotmail.com..... (734) 239-4190  
**V.P. BUSINESS** ..... Karen Turner  
karenturner@comcast.net..... (734) 678-7405  
**V.P. PROGRAMS** ..... Marie Naster  
mnaster@aol.com ..... (734) 981-3772  
**TREASURER** ..... Terry Koslowski  
mt.koz@hotmail.com..... (734) 239-4190  
**SECRETARY** ..... Mick Mastal  
mastal@comcast.net..... (734) 552-4773  
**SOUNDBOARD EDITOR** ..... Lee Ann Lack  
leelack@att.net ..... (734) 612-1172  
**WEBMASTER** ..... Karen Turner  
karenturner@comcast.net ..... (734) 678-7405

## HOLIDAY PLAYDATES

### NOVEMBER

22...Southgate Co-Op Thanksgiving Dinner, 6pm

### DECEMBER

4....Good Hope Lutheran Church, Garden City, 7pm

6....Royal Oak Public Library, TBA

8....Plymouth Seniors, 2pm

9....Canton Heartland Health Care, 3pm

10...Retired School Personnel, Livonia, 12:30pm

11...Retired School Personnel, Dearborn, 12pm

12...Generations at Botsford, Livonia, TBA

13...John F Kennedy Jr Library, Dearborn Heights, 1pm

13...Caroline Kennedy Library, Dearborn Heights, 3pm

14...St. Richard's Church, Westland, 2pm

16...Brookhaven Manor, Ann Arbor, 2pm

18...Livonia Civic Center Library, 12:15pm

## Holiday Practices

All practices will be held at Good Hope at 7pm.

Tuesday, October 7<sup>th</sup>

Wednesday, October 22<sup>nd</sup>

Wednesday, November 12<sup>th</sup>

Tuesday, November 25<sup>th</sup>

## The Back Pew – Jeff Larson



## Silver Strings Dulcimer Society

Meetings on the 1<sup>st</sup> and 3<sup>rd</sup> Thursdays every month  
7-9p.m .... with jamming till ...?

Meeting at **Good Hope Lutheran Church**  
In Garden City, Michigan

Featuring the hammered dulcimer, mountain dulcimer,  
and other acoustic band instruments :  
banjo, guitar, autoharp, fiddle, string bass, washtub  
bass, mandolin, folk harp, recorder, tin penny whistle,  
and harmonica.

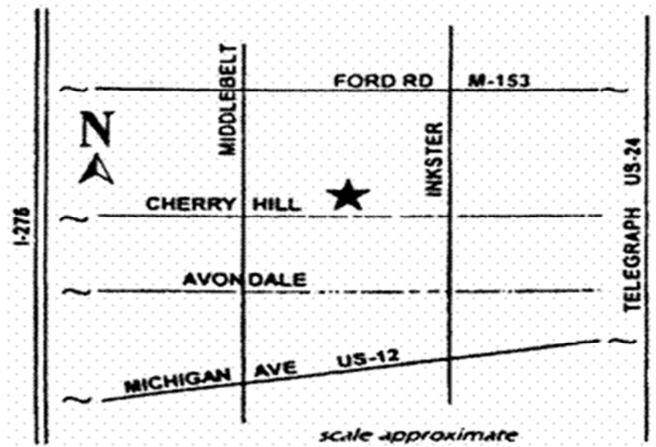
Learn new tunes and techniques, jam together  
with other players, receive new music  
and a monthly newsletter.

Participate in workshops, festivals, performances,  
picnics, fun and fellowship.

**VISIT OUR WEBSITE AT :**

**<http://www.silverstrings.org>**

**Everyone is welcome !**  
**Come to listen, or come to play.**



Start thinking about getting articles for the newsletter to me by the 20<sup>th</sup>.  
Articles or pictures from any member are always welcome.

## Silver Strings Dulcimer Society

P.O.Box 1116  
Garden City, MI. 48136



**IT'S OCTOBER...!**  
**HAPPY HALLOWEEN !!**

If you were on the mailing list  
your name would be here.